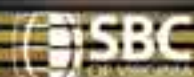


Proclaimer

SBCV • Southern Baptist Conservatives of Virginia • www.sbcv.org

The Cooperative Program

REAL THE DEAL



MAY/JUN 2008 • Vol. 10 No. 3



EDITOR

Doyle Chauncey

MANAGING EDITOR

Tom Scott

ART DIRECTOR

Patti Spencer

The **Proclaimer** is a collaborative effort of our area missionaries. As a ministry of the SBCV's Cooperative Program, the **Proclaimer** is published six times annually.

Subscriptions

The **Proclaimer** is sent free of charge to interested parties and friends of the SBCV upon request. Subscribe online: www.sbcv.org/resources/proclaimer. For more information or to contact us, visit www.sbcv.org.

From the Executive Director

Sowing in Tears

Doyle Chauncey



THE PRINCIPLE...

"Do not be deceived: God cannot be mocked. A man reaps what he sows."

Galatians 6:7 (NIV)

The basic principle of sowing and reaping is found throughout the Bible. Were it not for this law, the whole principle of "cause and effect" would fail.

BEHIND THE PRINCIPLE IS...

The Promise: *"The one who sows to please his sinful nature, from that nature will reap destruction; the one who sows to please the Spirit, from the Spirit will reap eternal life."* Galatians 6:9 (NIV)

But God has also told us to be careful where we sow. He looks upon our material possessions as seed, and he sees two possible kinds of soil: the flesh and the Spirit. We can use our material wealth to promote the flesh, or to promote the things of the Spirit. But once we have finished sowing, we cannot change the harvest. If every believer looked upon his material possessions as seed, and planted it properly, there would be no lack of financial resources in the work of the Lord.

BEHIND THE PROMISE IS...

The Peril: *"Let us not become weary in doing good, for at the proper time we will reap a harvest if we do not give up."* Galatians 6:9 (NIV)

The focus of this issue is the Cooperative Program (CP) at work in and through the churches of the SBCV. Since 1925, Southern Baptists have chosen CP to cooperatively sow the "Seed of the Gospel" (Jesus Christ) in every corner of the world.

We rejoice that it is a season both for sowing and reaping in some churches, but in the majority of churches throughout the Southern Baptist Convention, it is a season with little or no harvest.

It is easy for a laborer in the work of the Lord to get discouraged during dry seasons and tempted to quit when reading the headlines. The 2008 Pew Forum U.S. Religious Landscape Survey reports that the landscape is, "Diverse, Fragmented, and Declining in Number." That's the world we live in, but we must not lose heart or give up. We must continue to sow. Remember His Promise!

"Those who sow in tears will reap with songs of joy. He who goes out weeping, carrying seed to sow, will return with songs of joy, carrying sheaves with him." Psalm 126:5-6 (NIV)

WHITE BOARD

THE WHITEBOARD SESSIONS
HYATT REGENCY, RESTON
THURSDAY, MAY 22

1 DAY
8 INFLUENTIAL LEADERS
30 MINUTES EACH



REGISTER NOW AT
WWW.THEWHITEBOARDSESSIONS.COM

WHITE BOARD

2008 dates to remember

SBCV CALENDAR

may

- 2-3 **Disaster Relief Round-Up** (Statewide) — Grafton Baptist, Yorktown
- 17 **Bible Drill** — Beulah Baptist, Lynchburg
- 19 **Missionary Commissioning Ceremony** — River Oak, Chesapeake
- 22 **Ministers of Education Training** — Glen Allen
- 22 **Church Planter Network (CPN)** (Statewide) — Whiteboard Sessions, Reston

june

- 2 **Studentz Summer Intern Orientation** — Glen Allen
- 5-8 **Basic Training I** (Spanish) — Glen Allen
- 6-7 **Disaster Relief Training** (CW) — Thomas Road Baptist, Lynchburg
- 16-20 **Studentz Mission Plant**

july

- 7-11 **Studentz Camp** — Liberty University, Lynchburg

august

- 7-8 **YEC (Youth Evangelism Conference)** — Liberty Baptist, Hampton
- 28 **Church Planter Network (CPN)** (Statewide) — International Learning Center, Rockville

september

- 5-6 **Church Leadership Conference (CLC)** — Mount Pleasant Baptist, Colonial Heights
- 7-14 **State Missions Offering & Week of Prayer**
- 27 **Southwest Church Leadership Conference (SWCLC)**

october

- 3-4 **Pastors, Staff, & Wives Retreat**
- 6-10 **Basic Training I** — Glen Allen
- 10-11 **IMPACT Men's Conference** — Thomas Road Baptist, Lynchburg
- 23 **Church Planter Network (CPN)** — Statewide

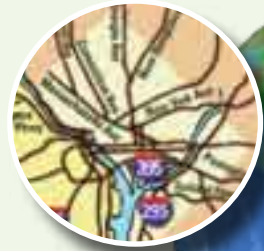
november

- 10-11 **SBCV Annual Homecoming** — First Baptist Church, Roanoke
- 30-12/7 **Week of Prayer for International Missions**

Contents

6 CP FUNDS HAVE GLOBAL IMPACT

Your investment in the Cooperative Program has allowed our missionaries to reach many in the District of Columbia.



8 OUR MISSION MUTUAL FUND

Pastor Steve Swisher has found an effective way to communicate CP's value and benefits to his congregation by helping them see it as an investment.

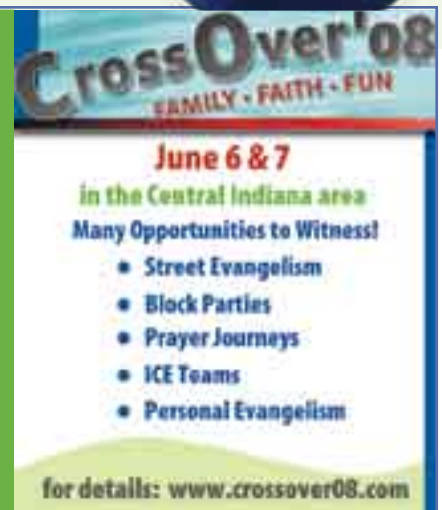


13 RETURN ON INVESTMENT

The genius behind the Cooperative Program and why it is so successful is the principle of synergy — more can be accomplished and effectiveness is multiplied when people join together and combine their efforts.



2008
SBC Annual
Meeting
Indianapolis
Indiana
June 10-11



From the Classroom to the World

STUDENTS SUPPORTED BY THE COOPERATIVE PROGRAM

Were it not for Southern Baptists, I would not have the privilege of doing what I do today. A Southern Baptist pastor baptized me, and a Southern Baptist church became my "home" during my teen years. When I began pastoring at age 20, my paycheck reflected the combined funds of four Southern Baptist entities: my church, the local Baptist association, the state convention, and the Home Mission Board (now NAMB). I graduated from Cumberland College, an institution affiliated with the Kentucky Baptist Convention, and I have two graduate degrees from a Southern Baptist seminary. Now, I serve Southern Baptists as dean of the Billy Graham School of Missions, Evangelism and Church Growth at The Southern Baptist Theological Seminary. Southern Baptists giving through the Cooperative Program have supported me educationally and vocationally throughout my entire ministry.

Now, I have the privilege of training men and women who are preparing to take the Gospel throughout North America and to the ends of the earth. Some will plant churches, believing that God will meet their needs through the generosity of Southern Baptists. Others will go to smaller churches and may receive financial assistance, but will also give back to others through their support of the Cooperative Program. Many will go to people groups where the Gospel has never

BY DR. CHARLES LAWLESS, JR.
Dean, Billy Graham School of Missions, Evangelism and Church Growth, Southern Baptist Theological Seminary

been — that is, they will be the first to tell others about Jesus — and they will go with the strong financial backing of Southern Baptists, blessed by the Cooperative Program.

I have seen them in the classroom, hungering to get to the world. I have preached in their churches, where they proclaim the Word, evangelize the community, and reach out to the world. I have been with them on the mission field as they lovingly and persistently work to develop relationships out of which they can speak of Christ. I have also seen them model trust in spite of questions, courage in the face of fear, and faith in the midst of profound spiritual darkness. They press on as spiritual warriors because they believe in the God they love and the message they bring.

In many cases, these pastors and missionaries will not likely meet you, nor will you likely meet them. I can, however, tell you that your giving is making a difference. You are one Southern Baptist helping other Southern Baptists to *Push Back the Darkness* through our cooperative efforts we call the Cooperative Program.



Dr. Lawless (R) with recent graduate, Dr. Raymond Bell (L).

Professor Lawless instructs students on the subject of church evangelism.

Pray for...



DARRELL WEBB

Church Enrichment Missionary
Northern Area

The Man

Born in Memphis, TN.

Saved at Macon Road Baptist Church at the age of thirteen.

Married for fourteen years to Angela; they have two children.

Verse of Importance

Acts 20:24

"But none of these things move me; nor do I count my life dear to myself, so that I may finish my race with joy, and the ministry which I received from the Lord Jesus, to testify to the gospel of the grace of God."

Says Darrell, "This verse helps me to realize my life does not belong to me but to Christ alone."

His Ministry

Church Enrichment Missionary — When I was 18 years old, I knelt at an altar in Rio De Janeiro, Brazil, while on a mission trip, and dedicated my life to the Lord, to serve Him in any way He would use me. From that day since, I've carried a burden to see a great awakening in the church of North America. Serving in SBCV's northern ministry area, which is beautiful in its geography and diverse in its population, allows me to minister to the needs of pastors and churches from the Northern Neck to Winchester.

REACHING THE WORLD USING THE Cooperative Program

BY DAVE HANNA, *Director of Southern Cross Ministry*

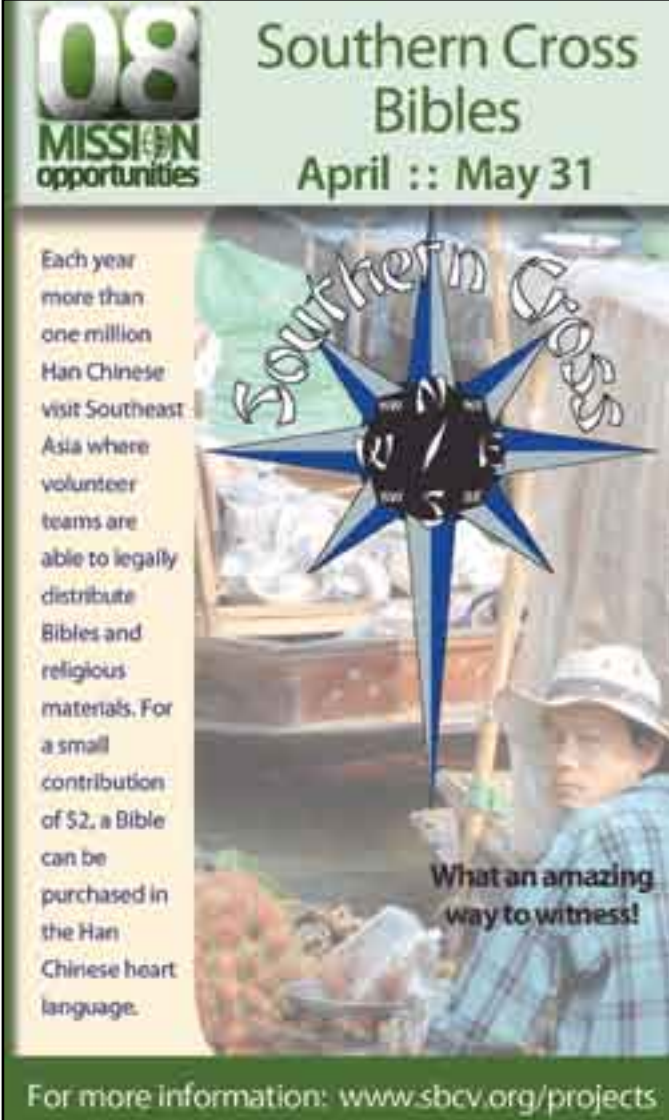
Many of us have heard of the Cooperative Program (CP), at least in a cursory manner, but sometimes, unfortunately, it slips our conscious minds because it is behind the scenes, silently supporting the work the Lord is doing through Southern Baptists around the world.

I have been asked to write a short article concerning the impact the Cooperative Program has had on my own life and ministry. It started all the way back in 1978 when I was first led by God's Holy Spirit to enter into full time ministry. I was going to a SBC college at the time, supported by the CP, and in my second semester switched my major to Religion and joined the Ministerial Association. That Association was also supplemented by the State Convention because of the CP gifts of churches in my home state. I graduated in 1980 and then left to attend seminary, Golden Gate Baptist Seminary. Golden Gate is one of six SBC seminaries funded by the Cooperative Program to provide professional training for those following the leadership of the Father into full time ministry. It is just another shining example of how the

Cooperative Program supports every facet of SBC life, silently and steadily working towards fulfilling the Great Commission of our Lord (Matthew 28:18-20).

After graduating from seminary I went to pastor First Baptist Church, Belmont, and here again, the Home Mission Board (now NAMB) sponsored the church for two years in order to provide the church a full time pastor. Seven years later, as the Father continued to lead, I was appointed by the Foreign Mission Board (now the IMB) to the Lao Peoples Democratic Republic. My wife, Tan, and I have served with the IMB for some seventeen years, in Laos, Vietnam, Thailand, and now reaching out to Chinese tourists with God's precious Word. All provided through your faithful giving to the Lottie Moon Christmas offering and the Cooperative Program. We are so very thankful.

Brothers and sisters, God is using the Cooperative Program to reach the world for Jesus Christ. Won't you join Him in that effort? Pray, give and go. The opportunities are before us and the Father is waiting for you to be willing, faithful and obedient.



08 MISSION opportunities

Southern Cross Bibles

April :: May 31

Each year more than one million Han Chinese visit Southeast Asia where volunteer teams are able to legally distribute Bibles and religious materials. For a small contribution of \$2, a Bible can be purchased in the Han Chinese heart language.

What an amazing way to witness!

For more information: www.sbcv.org/projects



REAL IDEAL

CP contributions to the SBCV for 2007 were 3% ABOVE the 2007 Ministry Investment Plan!

Cooperative Program Funds Having Global IMPACT

COOPERATIVE PROGRAM FUNDS, invested through the SBC of Virginia, are at work reaching lost peoples, *Pushing Back the Darkness*, and having global impact. The United States, throughout its history, has been called a “melting pot of people.” Everyday people from around the world still come to America for education or to make a new start in a land of opportunity and hope. Your investments in the Cooperative Program and SBCV are making it possible for these people to be reached with the eternal message of hope in Christ.

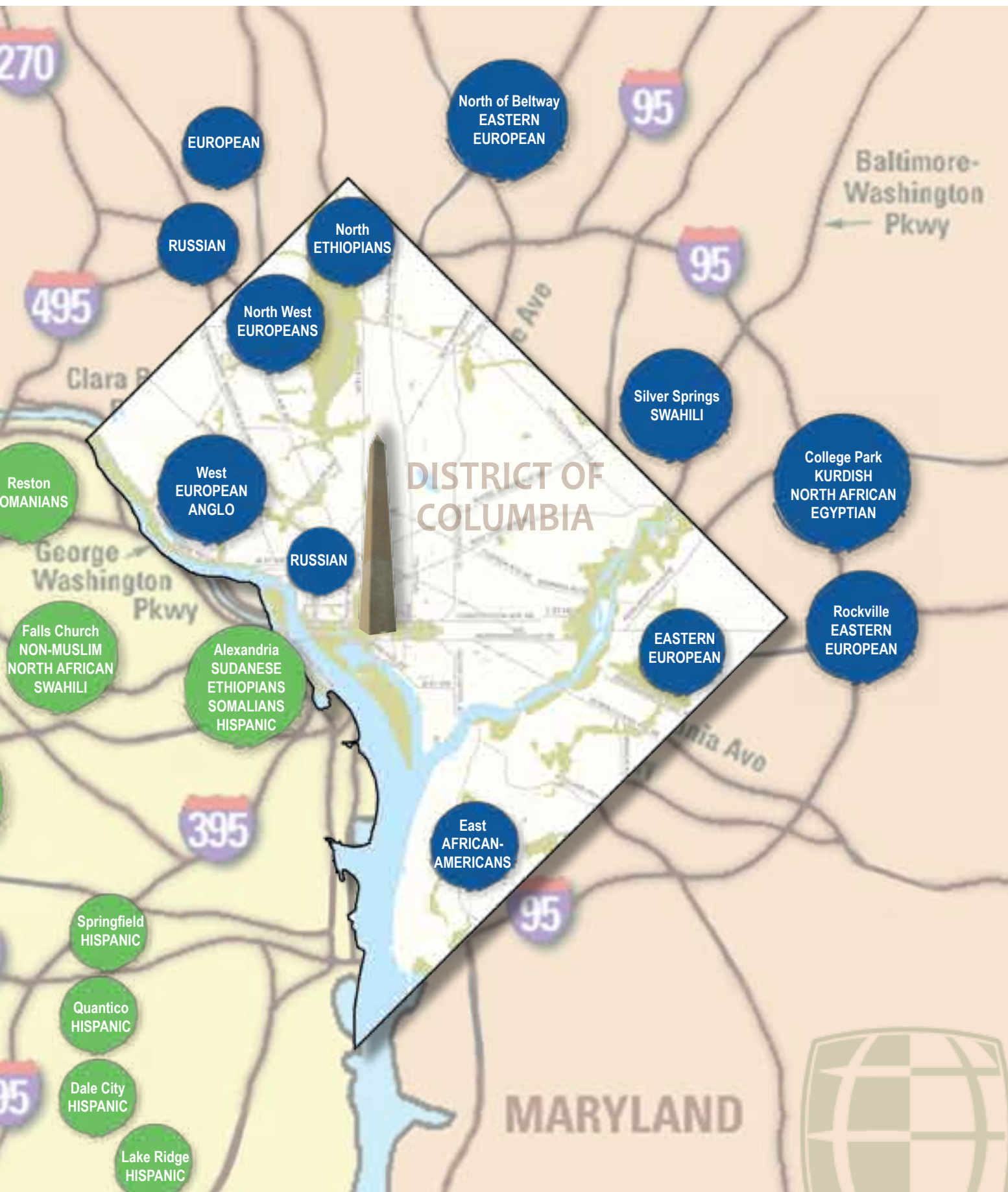
Most major urban centers in America are now very international in their make-up. This is especially true of our nation’s capitol, Washington, D.C., and its surrounding metro area. People from every nation, tribe and tongue now live, work, and study in the D.C. metro area. Approximately 140 different languages other than English are spoken as the first language in homes in the D.C. metro area. In reality, the District has become a foreign mission field. An amazing thing happens when a person from another part of the world is reached with the good news. They share their story with family and friends in their homeland, who in turn have the opportunity to embrace the same life-changing faith.

Your investment in the Cooperative Program has allowed our missionary to Africans to reach Kenyans, people from Congo, Uganda, and Tanzania with the Gospel, and start small group Bible studies in Falls Church, VA, as well as two in Silver Spring, MD. He is also building networks among non-Muslim Ethiopian people groups. Our Missionary to Muslim people groups has had the opportunity to lead whole families to a saving knowledge in Christ, because of the Cooperative Program. One Muslim man, who became a Christ follower, went back to his homeland to share the good news and work with missionaries in his country. Muslim people from Ethiopia, Somalia, and Morocco, as well as others from the Middle East, have been reached, too. Bible studies and networks have been established and now cover the entire metro area.

Our missionary to Asian peoples, because of your commitment, has planted a church for Filipinos and other Asians in Annandale, as well as a new work being started in Centerville among Filipinos. Cooperative Program funds have also enabled our missionary to Eastern Europeans to build networks among Russians and others from that part of the world who work in the diplomatic community. Cooperative giving has facilitated the establishing of forums for addressing issues of the day from a conservative Christian perspective. Continued giving by Southern Baptists through the Cooperative Program has also allowed us, already this year, to appoint a new Hispanic Missionary and a Missionary for Anglos in the D.C. area.

These efforts and many more in the District of Columbia and around the world are only possible because of y





our continued investment in the Cooperative Program through the SBC of Virginia. **Thank You!**



Our Mission Mutual Fund

BY MARK CUSTALOW,
Church Planting Strategist,
Southeast Ministry Area



While in seminary, I had a professor who often referred to being present at the Southern Baptist Convention, when in 1925, the Cooperative Program (CP) was voted on and approved. Since that time, tens of thousands of missionaries have been supported by the CP, as they continue to take the Gospel to the corners of the earth. Furthermore, students have been equipped as missionaries, pastors, Christian educators and worship leaders, all made possible by the combined gifts of Southern Baptists who believe they can accomplish more through voluntary resourcing.

Tragically, today, many church members don't have a working knowledge of the Cooperative Program or understand its benefits. It may appear we are losing the battle.

SBCV church planter, Steve Swisher of New Hope Community Church in Virginia Beach, has found a way to communicate Cooperative Program values very effectively to his members. He equates CP giving to investing in a mission mutual fund. The following are excerpts from a testimony he gave to the SBCV Executive Board in 2007.

"What we've got is a mission's mutual fund. We could invest all our money like a single stock, into one hope that maybe some small church somewhere in China makes it or breaks it. But, I call up my stock broker (area missionary) and say, 'We've got some money we want to invest, tell me where we can invest it.' And he diversifies our portfolio through [the Cooperative Program]. I love the fact our portfolio is so vast that when something happens at Virginia Tech, it's a part of our portfolio; when something happens down on the Gulf Coast, it's also a part of our portfolio; when something's happening over in China, it, too, is a part of our portfolio.

I can go back to my people and tell them when someone asks them about the guy on some remote island off the coast of China who's never heard about the Gospel. They can tell them this, 'God not only cares about

that person but he made me care so much about that person that I set aside ten percent of my income and I give it to God.'

I go to a church where they are so moved by the heart of God and know the heart of God wants so desperately to reach that guy off the coast of China that ten percent of everything we have, we give to a mission's mutual fund, which is doing everything possible to make sure that guy on the island off the coast of China hears the name of Jesus Christ."

No matter how you explain it, the Cooperative Program is a proven means for more effectively reaching our world with the Good News. Swisher has found a way to communicate its values and benefits to his congregation to help them see it as an investment. God will take whatever we have, bless it, and use it beyond all measure if we simply give it to Him. Southern Baptists believe the Cooperative Program is an extension of good stewardship investing in our world for Christ.

Take a moment and pray for those in the world today without the love of Jesus in their heart. At the same time, pray for the 11,000 Southern Baptist missionaries currently serving around the world and being supported by your gifts to the Cooperative Program.

*Steve Swisher,
pastor of New Hope
Community Church
in Virginia Beach.*



Fire on the Mountain

Green Ridge Mountain was on fire! The winds were topping 50 miles an hour as many church services in the Roanoke Valley began Sunday, February 10, 2008. In many churches it wasn't long before the discussion turned to, "What should we do about evening services, as winds are expected to increase?" The answer came quickly as trees and power lines started to fall. Churches went dark, as over a third of the area was without power. Initial thoughts, that electricity would not be restored until Wednesday, led to a decision to cancel evening services. Although evening services weren't held, it didn't mean there wouldn't be "church." Instead, the SBC of Virginia churches in the Roanoke Valley had "church" made up of Disaster Relief volunteers who gathered at Preston Oaks Baptist, under the leadership of Wayne Sink, Midwest Disaster Relief Coordinator. They prepared meals for 175

Fire Fighters, Emergency Medical Technicians (EMTs), and National Guardsmen, who were battling the fire a few miles away.

Disaster Relief Volunteers train to respond to calamity, not only around the world but at home, in their Jerusalem.

Wayne Sink describes his passion to serve, "I put myself in the place of

someone else. If this happened to me, I would like someone to come help me. So the least I can do is make myself available to help others." The desire to serve makes the description of the



church in Acts 2:42-47 come alive as churches cooperate to serve their communities.

The training and tools used during times of adversity are provided by the Cooperative

Program. It is made possible by churches all across America giving for a common cause and God's blessings.

Did you Know?

In 2007, the total CP and designated contributions to the SBCV exceeded \$15 million.



Mission Team Hijacked and Robbed

When the mission team from Grace Baptist Church, Virgilina, arrived in Guatemala they were anticipating the excitement of joining the previous team in a weekend rally. The praise and worship time is sort of a "changing of the guard" from one mission week to the next. Little did they know, in a short while, their bus would be hijacked, they would be robbed at gunpoint and left tied by their own shoelaces. A few hours later when they had not arrived at the rally, a search took place to locate them. Thankfully, they were found unharmed, but without some key essentials such as money, computers, cameras, and other electronics.

Though a traumatic experience, the team felt confident the Lord wanted them to remain and minister through their local mission partnership, *Gleaning for the World*. As a matter of fact, others from the Grace Church



Continued on next page



Retreat Answered the Call

Answering the Call to *Push Back the Darkness* was the theme for the 2008 Student Pastor Retreat. Over 150 student pastors, volunteers, and family members from SBCV churches across Virginia gathered at the beautiful Great Wolf Lodge in Williamsburg to be refreshed, rekindled, and to receive a renewed

vision for student ministry in their local church.

The student pastors were able to connect in fellowship around a table with other leaders from churches around the state while their family relaxed at the largest indoor water park on the east coast.

Rick Young, Middle School Student Pastor at First Baptist Church in Woodstock, Georgia, was the guest speaker. Pastor Young gave practical guidance and

creative resources to the student leaders to enable them to train leaders and to teach and apply the Word of God as they strive to reach students with the Gospel of Jesus Christ.

Young shared his personal testimony and brought the student ministers to a decision to renew their vision for following the will of God. He exhorted them to come back to God as their first love and to love the students who God has placed in their ministries.



Mission Team, *continued*

joined them the very next week.

Some might ask what happens when an incident of this magnitude takes place in a foreign country. For Grace Baptist Church, they had the advantage of the State Convention, the International Mission Board, and the Chaplaincy Ministry because they support missions through the Cooperative Program. Even though this was not an IMB mission endeavor, the missions partners stepped in to assist during their time of need.

Pastor Jack Stewart contacted their area missionary, Steve Bradshaw, who informed the SBCV Strategic Missionary Associate for Missions Mobilization, Mark Gauthier. Gauthier initiated contact with the IMB Member Care Representative, Mark Whitworth. Through Whitworth the Grace mission team discovered the Cooperative Program advantage. The IMB provides people on the mission site to make an immediate crisis assessment, evaluate the needs of the mission team, and provide follow-up with state-side counsel to victims and their families. In addition, Jack Noble, another SBCV Area Missionary and trained Chaplain reminded Grace Baptist Church of the SBCV's newest partnership with J.D. Moore and the Virginia National Guard Chaplain to Soldiers, who was also available for counsel to the team when they returned.

While this was an experience Grace Baptist will never forget, they are sure to remember the advantage of churches coming together for prayer, mission partnerships, trips and resources through the Cooperative Program.



"The conference gave practical training in areas that are transferable to any church setting."

tools were held.

One pastor emailed, "The words that came from these men were not their own. They came from the Lord. It was as if they were reading my mind and knew my exact situation. I am not talking about general platitudes. I am talking about detailed instruction from the Living God. When I entered the church, I was a discouraged pastor with no vision for what the Lord wanted me to do. When I walked out that

evening, I was an anointed, Spirit-filled, on-fire pastor, determined to stay where God had planted me, so I and His church could reach the lost in the community and around the world. God used the Evangelism Conference and those speakers, not to bring me a blessing, but to transform me. I am not the same, and I pray I never will be the same."

Expanded to four locations this year, several churches invited the keynote speakers to preach in their Sunday services. The results were an astounding 4,107 in

attendance with at least 12 decisions for Christ during these services. Praise the Lord! He is sending newly equipped and on-fire laborers into the harvest field to *Push Back the Darkness*.



Making an Investment in the Next Generation

One of the most important things we do as the Church is prepare to pass the baton to those who will follow us (come behind us). Through your Cooperative Program giving, you are making an investment in the next generation of churches and the next generation of church leaders.

You may ask, "How is this investment

being made in the next generation?"

Well, since you asked, it can be summed up in two words: student missionaries.

Student missionaries assist local churches, campus ministries, and North American Mission Board (NAMB) missionaries with evangelism and church planting. Their work concentrates on helping in community ministries, ministering to teenagers, working with campus ministries, or assisting in church planting. These student missionaries are members of SBC churches who can serve to assist church plants from one summer and up to five semesters. They are provided with room, board, travel to location of service, insurance, and a monthly honorarium, all made possible through the North American Mission Board, as they are supported

through the Cooperative Program and the Annie Armstrong Easter Offering.

If you are a church planter with a need or a student looking for an opportunity to serve, please contact your local area missionary at 1-888-234-7716 or find out more information by visiting:

student missions
answerthecall.net

**Answer
The Call...**

Be Someone's
Connection
to Jesus.

www.answerthecall.net



The Cooperative Program Goes to School

US/C2 missionaries are being commissioned through the North American Mission Board to take the Gospel to our nation's colleges and universities. Jenny Reid and Carrie Graham are just two serving in Virginia because of faithful giving to the Cooperative Program.

US/C2

**JENNY
REID**



Jenny Reid works alongside Aletheia Church in Harrisonburg, ministering to students attending four university and college campuses in the area. Jenny says, "Graduating from James Madison University two years ago with a major in Biology, I understand the pressures and lifestyle of a typical college student. God has given me a heart for those in tension and transition. Your support of the Cooperative Program, alongside the church planting efforts of Aletheia Church, enables me to reach out to the students here — they may be your children or those

of your neighbors, or your friends."

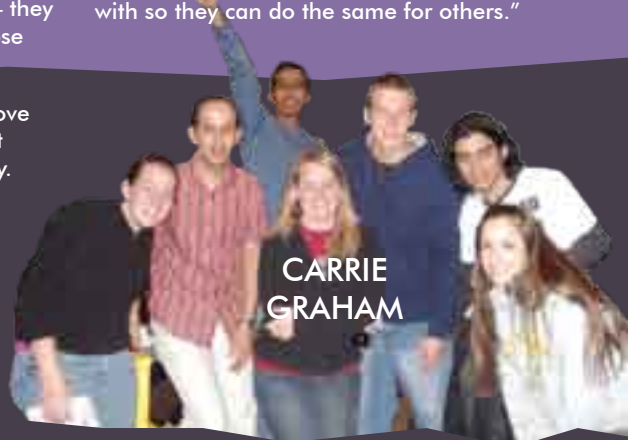
Jenny's ministry includes meeting with students one-on-one for prayer, discipleship, evangelism and women's ministry. Jenny is very gifted and her discipleship covers a wide range of topics from understanding the basics of salvation, baptism, the authority and authenticity of the Bible, to marriage, worry, dealing with conflict, and being prepared and equipped to share the Good News in a way that is relevant. Her goal is, "to equip every student I meet with so they can do the same for others."

Carrie Graham asked herself, "Where do I go now?" after graduating from college in the spring of 2005. "After being involved in campus ministry all four years of college, I definitely wanted to serve Him with my life." As Carrie got involved with Aletheia Church in Harrisonburg, she soon found ministry to be a natural fit, "It was exciting as I really started to feel comfortable sharing my faith." By the summer of 2006, she was committed to a new work in Richmond where Aletheia was beginning a church plant on the campus of Virginia Commonwealth University (VCU). "I got a job walking dogs at a 'doggie day-care.' When I wasn't working, I was on campus meeting students, sharing the message of Christ, and learning a lot about how to love people, while sharing the truth with them.

It was amazing! Really, seeing God move and using me to do so! The more I got comfortable, the more I wanted to stay. For the first time, I felt like everything was falling into place; my gifts and talents matched the needs of the ministry and I was learning so much about serving and knowing God."

Carrie's desire to stay became a reality through the Cooperative Program. The US/C2 position is a two year internship with a church plant or ministry focused on collegiate evangelism. Carrie continues to serve at VCU on the Aletheia Richmond church planting team. The dog walking job is now a fading memory as she

**CARRIE
GRAHAM**



focuses full time on the ministry God has given her. Her story would not be possible without Southern Baptists coming together in their giving to the Cooperative Program.

Each time you give your church offering consider this, a portion goes toward supporting young missionaries like Jenny and Carrie. The US/C2 missionary appointment is for adults who have graduated from college and have a call to ministry. They are commissioned to serve for two years in a full time ministry of evangelism and/or church planting. A major portion of their support comes from the Cooperative Program and Annie Armstrong Easter Offering gifts. **If you would like to know more, visit www.namb.net.**



BY BOB JONES
Pastor, Euclid
Avenue Baptist
Church

“I believe in the VALUE and EFFECTIVENESS of the Cooperative Program, and I am privileged to be the pastor of Euclid Avenue Baptist Church which believes the same way as I do,” says Pastor Bob Jones. The very first item in Euclid’s annual budget each year is the Cooperative Program, symbolically stating its importance. “We believe the Cooperative Program is the most effective tool for seeking to accomplish “the Great Commission” (Matthew 28:18-20), Jones says. Southern Baptist churches come in different sizes and with differing levels of financial resources,

Value & Effectiveness

Planters and Missionaries Serve the Lord Faithfully

but we participate together, striving to “preach the Gospel to every creature” (Mark 16:15), participating equally in the greatest work on the face of the earth.

I have been privileged to see first hand the value of consistently supporting the Cooperative Program. As a member of the Executive Board and former Trustee of the International Mission Board, he has seen close up the countless ways God has blessed our State and National Conventions. Pastor Bob says, “I have been blessed and challenged by hearing the thrilling testimonies of church planters and the ways God has blessed their work all across the state of Virginia. Even now our church is going through the process of determining if God is leading us to

sponsor a new church plant.” What enables planters and missionaries to serve the Lord faithfully in the places where He has planted them? The answer is our faithful prayers and our consistent financial support through the Cooperative Program.

Imagine what would happen to church planting work in Virginia and mission endeavors around the world, if for just one Sunday, churches suspended Cooperative Program giving from their offerings. The effect would be devastating. Consistent Cooperative Program giving is a necessity for unfailing and effective missions work. This is what the members of Euclid Avenue Baptist Church and Pastor Bob Jones believe about the Cooperative Program!

ENDURING ECONOMIC WAVES

CP Provides Where Others Miss Out

Cooperative Program?

What’s that? Five years ago I didn’t have any idea except it involved money and my church. Today, as a missionary with the International Mission Board (IMB) serving in Singapore, the Cooperative Program (CP) is vital to me and the 60 families here whom it supports. Serving as a business manager in Singapore since 2004, I see first-hand the results of the faithful giving of Southern Baptists.

The CP means 45,000 churches support us, not just 10 or 100. As a result, IMB missionaries are able to endure some of the economic waves which are part of living overseas, such as a family who needs urgent medical care for a child diagnosed with diabetes, or a young couple who learns there is a complication with their pregnancy. In our own city, we have seen several families with other mission organizations forced to leave Singapore for similar reasons. These are all real situations seen by our family in the last four years.

Without Cooperative Program giving, each of these situations could mean the end to a missionary in the field. Through CP funds however, IMB missionaries receive the medical care they need and are able to stay where God has called them.

Southern Baptists working together through the Cooperative Program mean our mission of taking the Gospel to unreached people can go forth without missionaries being encumbered with the continuous efforts to raise support from donors. While back in the U.S., rather than asking for more money, missionaries are able to encourage church members and thank them for giving. Also an instant connection is formed in many of the churches who participate in the Cooperative Program.

Money is necessary for our work. But how is it used? The Cooperative Program provides nearly half of the money used for missionary support, evangelism, medical needs, and church planting. I have been amazed at the detailed level of good stewardship the IMB exercises

over the monies entrusted to us by Southern Baptists. With wise budgeting and accounting oversight, money is spent intentionally, not haphazardly.

The money you give to your church that goes to the Cooperative Program is vital to our daily lives. Whether for our housing, the vehicles we drive, or medical care, your gifts are vital! Speaking for one missionary family, you are making a difference 10,000 miles away in Singapore and we are grateful.

The Rogerson Family





ROI = Return on Investment

Have you ever thought about what makes the Cooperative Program (CP) such an effective and successful tool for Southern Baptists? It is because it involves everyone. All Southern Baptists are asked to participate in sharing their financial resources so that more ministry can be done in Jesus' name.

The principle of synergy means more can be accomplished and effectiveness is multiplied when people join together and combine their efforts. Working alone can be good and productive, but working together and combining resources is far better. This is the genius behind the Cooperative Program and why it is so successful. With the CP, every church whether large or small, whether founded a century ago or yesterday (a brand new church plant), joins together to combine resources for effective ministry. Every individual Southern Baptist member, young or old, rich or poor, shares their resources to see that the Gospel of Jesus Christ is

announced far and wide. This partnership has enabled Southern Baptists to give millions of dollars and to carry out their purpose and goal of world evangelization.

Those in full-time ministry have been the recipients of these monies that have enabled them to carry out God's plan, purpose, and calling in their lives. What may not be noticeable and evident is the way these ministers and their ministries also share their financial gifts in order to fulfill the Great Commission. For example, the Southern Baptist Conservatives of Virginia (SBCV) is made up of 511 churches. Among them, some 150 are church plants, having been in existence only a short time. Although these young congregations are smaller and have limited financial resources, they dedicate funds to the Cooperative Program. They have seen how it works and have been recipients of its blessing and grace. Therefore, they believe in it! In 2007, SBCV church plants gave a total of \$711,142 to the

Cooperative Program.

What a beautiful model of the Cooperative Program and how magnificently it works. The Cooperative Program was

instrumental in helping launch these new churches, helping to provide the necessary money to birth these new works. These churches, in turn, give to the Cooperative Program and are now starting other new churches. It's a wonderful cycle and a striking example of God's blessings.

Here in Virginia, the Cooperative Program works, and works well. However, for this to continue we must all continue to do our part. Let's follow the example of our SBCV church plants through our continual and sacrificial giving.



NORTH AMERICAN MISSION BOARD

MISSIONARY COMMISSIONING CEREMONY

May 19 : 7 p.m.
 River Oak Church
 255 Great Bridge Blvd., Chesapeake

For more information: www.namb.net

Register online at www.sbcva.org

Ministers of Education Conference
 May 22 • 9am - 3pm
 SBCV, GLEN ALLEN, VA

Guest Speaker
David Francis
 Director, Sunday School
 LifeWay Church Resources

DEADLINE TO REGISTER
 May 20 @ 5 p.m.

MIN OF Ed 08
 DEVELOPING THE NEXT GENERATION
 OF LEADERSHIP

MAY • JUNE 13

ENABLING MINISTRY

generation to generation

For generations God has used the Cooperative Program to impact ministries and families around the world. Pastor Daryl Harbin, senior pastor of Zion Baptist Church in beautiful Orange, gives a personal testimony of how he and his family have been impacted, not only by the monetary blessing, but the enabling benefit of the Cooperative Program (CP).

Like Timothy of old, Harbin was taught from God's Word by his parents' life in Christ. "The way I lived had all to do with the way I gave of my finances," stated Harbin. It was at an early age he began the practice of giving a dime out of every dollar from his allowance to the church.

As a lad, Daryl saw firsthand the many benefits of the Cooperative Program. Through his father's ministry as a

"Home Missionary" for the Georgia Baptist Convention in the inner city of Atlanta, the Cooperative Program provided meals, medicine, worship materials, and a supplement for his father's salary that blessed his family's ministry. "I remember the food and medicine lines on Saturday mornings in front of our little church building. CP monies were used to enable our family to purchase food and medicine to personally give to the poor, destitute and elderly in the inner city of Atlanta." Daryl was inspired of the Lord by the servanthood of his parents, "They were examples of the true spirit of the Cooperative Program."

Now Pastor Harbin reflects how his adult ministry continues to be impacted by the enabling of the Cooperative Program. As a church planter in Statesville, NC, Harbin states, "Monthly, CP monies, through the new church growth assistance program, helped supplement the finances for outreach and evangelism in the community for my church plant. Without this assistance, our outreach would have

been hindered (Meals on Wheels), materials such as Bibles, study materials, and tracts, would not have been purchased and his enablement for full-time ministry on the field would not have been possible."

Harbin concludes, "I continue to see the enabling work of the Cooperative Program in so many ways, from the inner city of Atlanta's poor to the newest church plant in an upper middle class area of North Carolina, to the oldest associational (now SBCV

"It was at an early age he began the practice of giving a dime out of every dollar..."

aligned) church in Orange. The Cooperative Program is still being used to enable the Gospel of Jesus Christ to reach the young and old, rich and poor, and the lost and saved. I thank God for the Cooperative Program of the Southern Baptist Convention and what it has personally meant to my life and how I have seen it at work in people's lives all over the world."

Pray for...



RON KIDD

Church Planting Strategist
Northern Area

The Man

Born in St. Petersburg, FL.

Invited to church by neighbors and accepted Christ during a Sunday evening service. "The next day as I mowed lawns, I was so full of joy all I wanted to do was sing hymns."

Married for 40 years to Linda; they have 2 children and 3 grandchildren.

Verse of Importance

Philippians 3:13-14 "Brethren, I do not regard myself as having laid hold of it yet; but one thing I do: forgetting what lies behind and reaching forward to what lies ahead, I press on toward the goal for the prize of the upward call of God in Christ Jesus."

Ron shares, "I keep pressing on, always looking upward, only desiring to fulfill His calling and will for my life."

His Ministry

Church Planting Strategist — Called into ministry in 1966, Ron has had a profound passion for students, missions and church planting. He has had extensive ministry in church planting and in student ministry. He, and wife Linda, served 14 years in France as missionaries. One of his greatest joys was being used by God to plant a church in the suburbs of Paris, and to continue to see it be a vibrant and effective witness for Christ in one of the world's most secular of societies.

*Did you
Know?*

485 SBCV churches
and church plants
contributed to the CP
in 2007.



SBCV STUDENTZ CAMP

IS THE OFFICIAL STUDENT CAMP OF THE SOUTHERN BAPTIST CONSERVATIVES OF VIRGINIA
AND IS SUPPORTED BY YOUR PARTNERSHIP THROUGH THE COOPERATIVE PROGRAM

:: Special Guests ::



SPEAKER Jamie GEORGE



CONCERT pocket FULL of ROCKS



WORSHIP Joel ENGLE



SKITS clear vision DRAMA

SBCV STUDENTZ SUMMER08

:: Registration ::
:: Deals & Deadlines ::

**EARLY
DEAL**
\$210
before JUN 01

before JUN 01
\$230
**LATE
DEAL**

:: Date & Location ::

July 7-11th, 2008
Liberty University | Lynchburg, VA

www.sbcv.org/studentz/camp

SBCV studentz CAMP

To receive the Proclaimer or to correct the information appearing on your mailing address, complete this form and return to:
Southern Baptist Conservatives of Virginia, Proclaimer, 4101 Cox Road, Suite 100, Glen Allen, VA 23060.

☐ New Subscription ☐ Correct my mailing address ☐ Dr. ☐ Rev. ☐ Mr. ☐ Mrs. ☐ Miss

Name _____ ☐ Senior Pastor ☐ Church Staff ☐ Layperson

Address _____ City _____ St _____ Zip _____

Phone _____ Fax _____ Email _____

Church and City _____

SBCV studentz YEC

:: Date & Location ::

August 7-8th, 2008
Liberty Baptist Church | Hampton, VA

www.sbcv.org/studentz/yec

SBCV STUDENTZ
 SUMMER08

:: Registration ::
 :: Deals & Deadlines ::

**EARLY
 DEAL**
\$25
Before 8th 2008

at the door
\$35
**LATE
 DEAL**

:: Special Guests ::



SPEAKER algernon TENNYSON



WORSHIP/CONCERT DOWNHERE



SKITS clear vision **DRAMA**

SBCV STUDENTZ YOUTH EVANGELISM CONFERENCE

IS THE OFFICIAL STUDENT YEC OF THE SOUTHERN BAPTIST CONSERVATIVES OF VIRGINIA
 AND IS SUPPORTED BY YOUR PARTNERSHIP THROUGH THE COOPERATIVE PROGRAM



Proclaimer

4101 Cox Road, Suite 100
 Glen Allen, VA 23060

888.234.7716 | 804.270.1848

fax: 804.270.1834
 website: www.sbcv.org
 email: proclaimer@sbcv.org

Non-Profit Org.
 U.S. Postage
PAID
 Waynesboro, VA
 Permit No. 129