

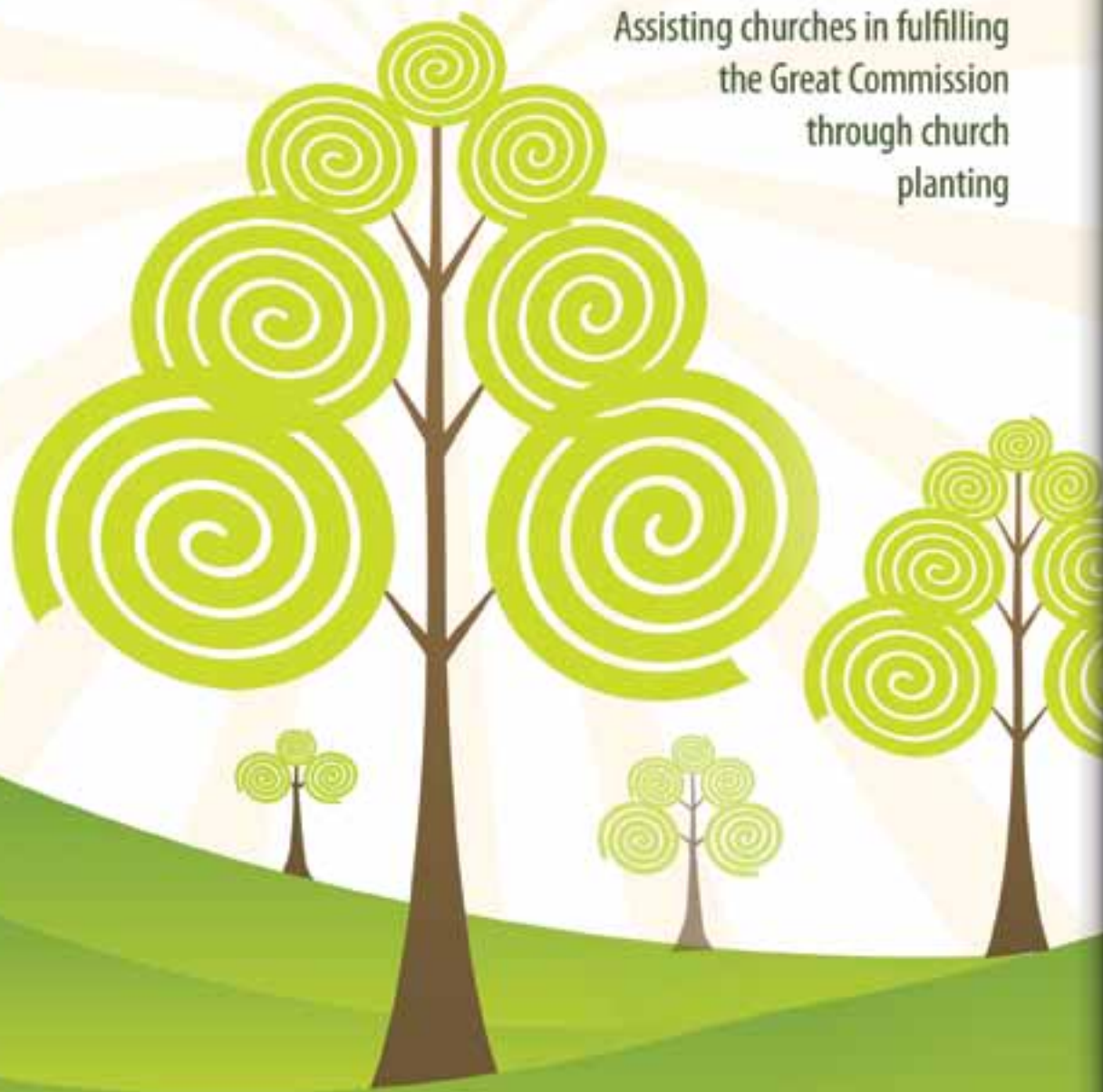
SBC of Virginia



PUSHING BACK THE DARKNESS
THROUGH EVANGELISM

MULTIPLYING CHURCHES

Assisting churches in fulfilling
the Great Commission
through church
planting



PROCLAIMER

www.sbcv.org
Jan : Feb 2010
Volume 12
Number 1



Setting the Course Is Critical

Dr. Ginn's Itinerary

JAN 3

Union Chapel Community Church
Lynch Station

JAN 10

Kingsland Baptist Church
Richmond

JAN 12

Richmond Christian School
Richmond

JAN 17

Bethel Baptist Church
Yorktown

JAN 24

Bethel Baptist Church
Yorktown

JAN 31

Bethel Baptist Church
Yorktown

FEB 7

Bethel Baptist Church
Yorktown

FEB 8-13

State Executive Directors' Meeting
Coeur d'Alene, ID

FEB 14

Bethel Baptist Church
Yorktown

FEB 21

Bethel Baptist Church
Yorktown

FEB 28

Bethel Baptist Church
Yorktown

Setting a correct course is important. In fact, it can be a matter of life and death. An error of even one or two degrees can be disastrous.

On November 28, 1979, a plane-load of sightseers boarded a flight in New Zealand. The destination of Air New Zealand Flight 901 was Antarctica. The assigned pilots had never flown that particular route. Unbeknownst to them, someone had charted their course incorrectly by two degrees. Though the error was slight, by the time they reached the frozen continent, they were twenty-eight miles off-course.

The tundra below and the cloud cover above all melded into one indistinguishable mass called a sector whiteout. The pilots could not see that they were flying directly into the face of Mount Erebus, a volcanic peak that stands over 12,000 feet high. Suddenly, alarms began to sound. The ground was abruptly rising beneath them. Before the pilots could pull up, the plane crashed into the face of the mountain, killing all 257 people aboard.

It is vital to stay on course. Psalm 119:105 teaches that God has given us His Word as a lamp for our feet and a light for our path. We can stay on course as we live by His coordinates. That trajectory leads to life and light.

Here at the SBCV, we have prayerfully sought God's direction for our next decade of ministry. On November 9, 2009, we adopted in full session at our Annual Homecoming the long-anticipated report of the Vision 20/20 Team (for the full report, see www.sbcv.org/aboutus/vision2020.htm). The course it sets is in line with biblical principles. Here are its

six major proposals. They are that we function as a:

Multiplying missional network ... in which we double the number of churches from over 500 to over 1,000;

Mobilizing missional network ... in which 500 churches commit to the *Acts 1:8 Challenge*;

Maturing missional network ... in which 500 churches move to the next level in congregational health;

Sacrificial missional network ... in which an additional .25% of our undesignated Cooperative Program receipts will be forwarded to SBC mission causes each year for the next decade;

Streamlined missional network ... in which our staff and calendar are streamlined for optimal Kingdom impact; and a

Contextualized missional network ... in which the unchanging message of the Gospel is communicated in the most effective manner possible for our context.

In each of the *Proclaimer* issues of 2010, beginning with this one (see page 6), I will dedicate an article to each of the six emphases outlined in the report. These constitute the major outlines of the course that we intend to follow for the next decade. May we end this decade and look back in amazement at the heights to which our Lord has led.

Jeff Ginn

• VIRGINIA SOLDIERS R & R KITS
January - February 28th
 • ANNIE ARMSTRONG EASTER OFFERING
February - March 8th
 • BGR IN-HOME CARE KITS
February - March 31st
 • WITNESSING BRACELETS
February - April 30th
 • CHRISTIAN LIBRARIES
March - April 30th
 • BACK-TO-SCHOOL
PACKS FOR ARM
April - May 31st
 • STATE MISSIONS OFFERING
June - July 31st
 • SPORT SHOES AND SOCKS
for URUGUAY
August - September 12th
 • LOTTE MOON
CHRISTMAS OFFERING
October - November 30th
 • CHRISTMAS OFFERING
November - December 12th

MISSION opportunities 2010

Learn more at www.sbcv.org/multipling

YOU & YOUR CHURCH ON MISSION

SBC of Virginia

2010 Statewide Church Planting Networks

Feb. 25:
Staples Mill Road
Baptist Church,
Glen Allen

April 30-May 1
At E412

Spring Basic Training

March 5-6: Part A
March 26-27: Part B
SBCV Glen Allen

SBC of Virginia Learn more at www.sbcv.org/multipling

SBC of Virginia 2010 CALENDAR

January

Mission Ops, Va. Soldiers R&R Kits.....Jan-Feb28
 Collegiate Winter RetreatJan 5-7
 Studentz YEC (Youth Evangelism Conf.).....15-16

February

Mission Ops, Annie Armstrong
 Easter Offering Feb-Mar7
 Mission Ops, BGR In-Home
 Care Kits Feb-Mar31
 Pastors, Staff, & Wives Retreat.....12-13
 Student Pastor Retreat.....19-20
 Disaster Relief Training, North.....19-20
 Church Planter Network, Statewide 25

March

Mission Ops, Witnessing Bracelets Mar-Apr30
 Disaster Relief Training, Central-East.....5-6
 Disaster Relief Training, Central-West12-13

April

Mission Ops, Christian Libraries for
 Overseas..... Apr-May31
 Disaster Relief Training, Southeast9-10
 VBS Training Clinic.....10
 VBS Training Clinic.....17
 VBS Training Clinic.....24
 E412 Apr30-May1

May

Disaster Relief Training, Southwest14-15
 Statewide Bible Drill & Speakers'
 Tournament 15
 Statewide Church Planter Network..... 27

June

Mission Ops, Back-to-School Packs
 for ARM..... Jun-May31
 Dakotas Student Mission Project19-27

July

Studentz Camp 12-16

For more information: www.sbcv.org



Contents

JAN • FEB 09 Vol. 12 No. 1

6 vision20/20



Unpacking Our Future

A SPECIAL, SIX-PART FEATURE
focused on the recently released
Vision 20/20 Report

Each of the six major emphases recommended by the Vision 20/20 Team is unpacked by the executive director of the SBC of Virginia. Take a closer look at the first part, "Multiplying Missional Network," where Dr. Ginn explains, "...it's a goal around which we all can rally."



Church Planting - CENTER PULLOUT

A listing of church planters approved in 2008 and 2009 make up this pullout section. Please use it as a daily prayer reminder. Also, check out its back page (page 12) to find out what makes up a church planter. Could you be one?



A Merger Multiplies

Five years ago, Beacon Baptist Church, a church plant looking for a building, merged with a small church congregation looking for a pastor, Virginia Beach Baptist Church. The merger spirit didn't stop there! They continue to multiply with the sponsoring of two new church plants.



From Chop Shop to God's Shop

What Satan once used for ill-gotten gains, God has turned into a worship center and church building. By being faithful, God's Storehouse Baptist Church in Richmond has already outgrown its humble facility and may soon be on the move.



The Strength of Teaming

If you think your church isn't capable of sponsoring a church plant on its own, consider this...team up! Bedrock Community Church and Oasis Church did just that. They have seen first-hand the power of the team approach.



PUSHING BACK THE DARKNESS THROUGH EVANGELISM

SO THAT ALL...
HEARD THE WORD
OF THE LORD.

ACTS 19:10



The SBCV is a fellowship of Southern Baptist Convention churches cooperating to assist local congregations in their task of fulfilling the Great Commission as commanded by our Lord Jesus Christ.

EditorJeff Ginn

Managing EditorBrandon Pickett

Copy EditorChristina Garland

Graphic Designer ...Patti Spencer

Media SpecialistNathaniel Listrom

The **Proclaimer** is a collaborative effort of the area missionaries of the Southern Baptist Conservatives of Virginia (SBCV). As a ministry of the SBCV's Cooperative Program, the **Proclaimer** is published six times annually.

Subscriptions:

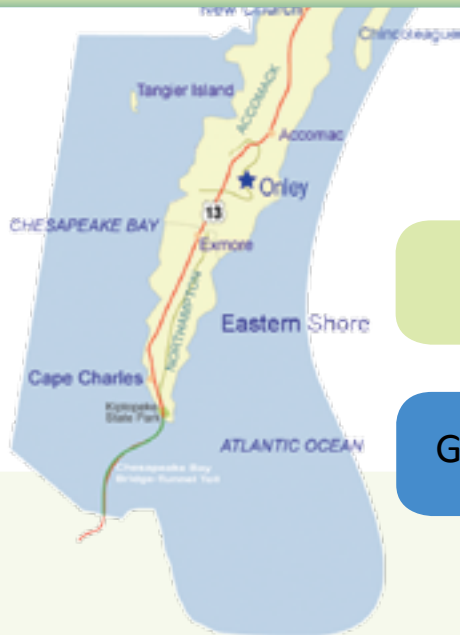
The **Proclaimer** is sent free of charge upon request. You may subscribe online at: sbcv.org/resources/proclaimer. For more information or to contact us: www.sbcv.org.

EVERY BELIEVER SHARING
EVERY PERSON HEARING





Compassion for Our Community



by Vernig Suárez, Associate Church
Planting Strategist, Southeast Region
Translated by David Willis

Iglesia Bautista del Camino, VA

Grace Fellowship en Español, FL

This summer, the church I pastor, Iglesia Bautista del Camino in Norfolk, was blessed to begin a partnership with a Florida Baptist church called Grace Fellowship en Español. In July, a team of seven church members from Grace Fellowship and their pastor, Efrain Silva, came to the Southeast Region of Virginia to help us fulfill the Great Commission. During the week they were in Virginia, God gave us the opportunity to undertake various projects I had planned as a pastor and as an SBCV associate church planting strategist for the region.

The team from Florida joined with brothers and sisters from our church to complete a PROBE on Virginia's Eastern Shore, thanks to help from Pastor John Burr of Onley Baptist Church in Onley. We covered the area, visiting Hispanic stores and restaurants, prayer-walking in heavily Hispanic communities, and (glory to God!) having meaningful contacts with many Hispanic families. During this time, I met Pastor Zacarias Hinojosa. We were able to assist his church with a service project the

following month. We saw great progress for the Gospel among the burgeoning Latino population of the Eastern Shore.

We also completed another PROBE in southern Chesapeake. Through the PROBE, we found an apartment complex where numerous Hispanic families live, and God allowed us to share the Gospel with many of them. To His glory, 13 people (some from Mexico and others from Central America) received Christ as Lord and Savior! We continued surveying, witnessing, and praying in nearby Suffolk and Portsmouth. I was able to see first-hand the great need to begin Hispanic churches in two of these cities. We are praying this new work will commence soon.

I want to tell you, dear brothers and sisters, that the harvest remains plentiful, but the workers remain few. Every day, I pray that the Lord of the harvest will send Hispanic workers to southeastern Virginia. Please pray for me and for the Hispanic church planting movement in Hampton Roads.

RESOURCE

■ **Website:**
www.sbcv.org

■ **SBCV Contact:**
Call 888-234-7716 for details from your region's missionary.

■ **Prayer:**
Pray for an increase of workers to join in the Hispanic church planting movement in southeastern Virginia.



PART 1
of 6

The SBCV Is a Multiplying Missional Network

by Jeff Ginn, Executive Director

THE GOAL

The SBCV currently has over 500 affiliated congregations. Each one is a lighthouse for the Gospel. The Vision 20/20 Report calls for a doubling of the number of congregations to over 1,000 by the year 2020. The Great Commission to make disciples of all the nations necessitates the multiplication of churches. This is a goal around which we all can rally.

THE CHALLENGE

Church planting has been a hallmark of the SBCV since its earliest days. Over our first decade, we have planted approximately 140 churches. These congregations are now an integral, vibrant, and contributing part of our convention. In the coming decade, our goal is to plant 400 new churches! That means we are going to have to pick up the pace of church planting significantly.

THE STRATEGIES

To accelerate church starts is going to require much from us all. How can you partner in this harvest?

Pray. According to Scripture, we are to pray for laborers, for boldness, for wisdom, for the acceptance of the ministries we extend, etc. Join us in praying that this goal will be reached and exceeded for the glory of God.

Give. In spite of current economic realities, God's people are demonstrating an unflagging faithfulness in giving. For this, we are grateful. The Cooperative Program (CP) is the primary channel by which our church planting ministries are sustained. Above and beyond the CP, churches can be a part of sponsoring plants directly.

Innovate. "Business as usual" is not going to get the job done. While the population in the US is skyrocketing, church attendance is slumping. Even Southern Baptists, who tend to be quite evangelistic, have been plateaued for a generation. We must reverse these trends! To do so, church planting will take many forms. Locales, leaders, and languages may differ from traditional expectations; yet as long as these innovations are biblically faithful, we will rejoice as they flourish.

Participate. Obviously, giving and praying are two ways every believer and church can participate in planting a new congregation. The harvest will require that we not stop with these important elements. God is likely calling every church and believer to be hands-on in a new church start. Get in on the adventure!



One Small Group at a Time

REACHING RICHMOND

by Ron Kidd, Church Planting Strategist, Central-East Region

In 2009, God did a mighty and extraordinary thing in the Central-East Region! In Richmond and the nearby vicinity (Mechanicsville, Midlothian, and Chester), ten new church planters joined the SBCV to minister in eight new church plants. In addition to the SBCV planters, there are at least six other evangelical groups starting churches in Richmond.

Each church plant is unique, with different styles and approaches to reach the lost for Christ. Despite their differences, these plants share an important element: small groups. Small groups go by different names—cell groups, life groups, community groups, etc.—but the objective is the same. Dr. John Stott, English pastor and author, stated, “The value of the small group is that it can become a community of related persons, and in it, the benefit of relatedness cannot be missed nor its challenge evaded. I do not think it is an exaggeration to say, therefore, that small groups are indispensable for our growth into spiritual maturity.”

One church plant calls its small group ministry, “LIFE groups.” LIFE is an acronym for Living in Faith Everyday. They believe the greatest potential for life-change to occur is when a person is actively involved in a small group environment. LIFE groups meet for Bible study and prayer and commit to accountability, friendship, and support. They are safe places to wrestle with tough questions, share thoughts, and build lasting friendships. A planter from another Richmond church plant describes his plant’s community groups as places where “you can expect to see real people gathering weekly to have food, conversation, and prayer and to discuss how the Gospel applies practically to [their] lives. Community groups are also engaged in serving neighborhoods and meeting needs in the community. [These groups are] a great avenue for building relationships and

challenging each other to be servants of Jesus Christ.”

Among the new SBCV church plants in Richmond and its vicinity, there are 50 small groups meeting on a weekly basis—at least one every night of the week! These church plants are using the small-group vehicle for evangelism, discipleship, and community-building. The ultimate goal is to reach Richmond for Christ, make healthy and mature disciples, and plant strong churches.

As I see these 50 groups meeting weekly, I can’t help but be reminded of another church highlighted in Acts 2. It was said of those brothers and sisters that:

- “they devoted themselves to the apostles’ teaching, to fellowship, to the breaking of bread, and to prayers” (v. 42)
- “all the believers were together and had everything in common” (v. 44)
- “every day they devoted themselves [to meeting] together in the temple complex, and broke bread from house to house. They ate their food with gladness and simplicity of heart, praising God and having favor with all the people” (v. 46-47)
- “and *every day the Lord added to them those who were being saved*” (v. 47) (HCSB)

Lord, please do the same through these 50 small groups and save many in greater Richmond and around this state!

RESOURCE

■ **Website:**
www.sbcv.org/multiplying

■ **SBCV Contact:**
 Call 888-234-7716 for details from your region’s missionary.

■ **Prayer:**
 Pray that these small groups will make healthy and mature disciples.



Feb 12-13, 2010

pastors, staff, & wives retreat

with **Chuck & Rhonda Kelley**

Stonewall Jackson Hotel Staunton

\$250 per couple through January 8, 2010
 \$275 per couple after January 8, 2010

For information or to register, visit www.sbcv.org

SBC
 Southern Baptist Convention



Strong Strands

BUILDING STRONG CHURCHES

by Jack Noble, Church Health Strategist, Central-West Region

*Ecclesiastes 4:12
— And if somebody
overpowers one
person, two can
resist him. A cord
of three strands is
not easily broken
(HCSB).*

Two standing in partnership have a much better chance of overcoming a foe than one standing alone. This principle, found in Ecclesiastes 4:12, is one of the reasons SBCV church plants need sponsor churches. Sponsor churches do more than just give financially; they partner with the plants they support. Two churches standing in partnership and serving together have far more impact than a new church going it alone. One such partnership exists between Cave Spring Baptist Church, a 134-year-old church plant in Roanoke, and a new church plant, Christian Life Fellowship in Jonesville.

The partnership of Cave Spring and Christian Life Fellowship involves three strands that make a strong cord:

1. FINANCIAL—Cave Spring has committed to pay the monthly mortgage for Christian Life Fellowship's meeting place. While this strand is important, its true strength is measured when bound with the other two strands.

2. PRAYER—The Missions Committee of Cave Spring, led by Hayden Furrow, meets regularly to pray for Christian Life Fellowship. This consistent prayer time began with a team from Cave Spring prayer-walking Jonesville in August of 2009.

3. PLANTING ACTIVITIES—This strand represents one of the greatest needs of a new church—labor. Members from Cave Spring have made six trips to Jonesville to provide extra hands for ministry and labor to renovate Christian Life's meeting place.

When a sponsor church partners with a church plant, a dynamite first service is no surprise. On October 4, 2009, Christian Life Fellowship held its first preview service with thirty-three in attendance

and one following in believer's baptism!

How can your church get involved to birth a new church plant? This process is also a three-strand cord.

1. PROMOTION—Remind the congregation of the lostness surrounding them. Some may wonder why new church plants are needed when there are so many churches in Virginia. Statistics show that new congregations reach the lost for Christ more effectively than existing congregations. Six out of seven Virginians are unchurched. Cave Spring asked Tony Inmon and Randy Aldridge, SBCV church planting strategists, to speak to the congregation about the lostness in Virginia.

2. PROBE—A PROBE is an intentional survey of a community, which asks the simple question: "Is there a church that will reach this home, this family, for Christ?"

When it is obvious that no church has attempted to reach certain pockets of an area, it is determined that a new church is needed there. The PROBE in the Jonesville area concluded that 63% of people there did not have a church affiliation and less than 20% attended church on any particular Sunday. The Jonesville PROBE clearly demonstrated a need for another church.

3. PRAY—Ask the Lord of the harvest about your church's involvement in planting a church. This could be a regular time during church prayer meetings or praying on-site in a specific community, as Cave Spring did several months before the launch of Christian Life Fellowship. They prayed specifically for the 30,000 people within a 15-minute drive of the new plant.

Would your church join churches like Cave Spring, who actively seek out potential church plant partnerships?...a cord of three strands is not easily broken.



RESOURCE

■ **Website:** www.sbcv.org

■ **SBCV Contact:**
Call 888-234-7716 for details
from your region's missionary.

Consider actively seeking
out potential church
plant partnerships.





MULTIPLYING CHURCHES

Assisting churches
in fulfilling the
Great Commission
through church planting

Your SBCV Church Planting Strategists:

SOUTHWEST

Randy Aldridge
raldridge@sbcv.org

CENTRAL-WEST

Larry Black
lblack@sbcv.org

SOUTHEAST

Mark Custalow
mcustalow@sbcv.org

CENTRAL-EAST

Ron Kidd
rkidd@sbcv.org

NORTH

Bill Wennersten
bwennersten@sbcv.org



08-09

The Southern Baptist Conservatives of Virginia

Please commit to pray

for your SBC of Virginia church planters throughout the next year.
Consider the requests (Scripture references, right) of the Apostle Paul for him and his missionary team as you pray for these church planters.

ROMANS 15:30-31

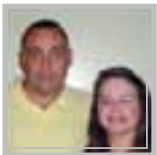
EPHESIANS 6:18-20

COLOSSIANS 4:2-4

2 THESSALONIANS 3:1

CHURCH PLANTERS APPROVED, AUG 2008 - SEP 2009

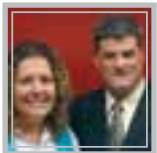
CPA = Church Planter Apprentice | CPM = Church Planting Missionary | CCP = Catalytic Church Planter | LCP = Lay Church Planter



AGOSTINO, GUS (CPA)

Wife: Michelle

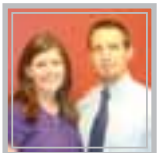
Church Plant: Family Life Church of Aylett, Aylett
Sponsor Church: Family Life Baptist, Mechanicsville



CAUTHORNE, MIKE

Wife: Ingrid

Church Plant: Centerpoint Community, Mechanicsville
Sponsor Church: Winn's Baptist, Glen Allen



CHRISTMAS, ROBBY (CPA)

Wife: Joanna

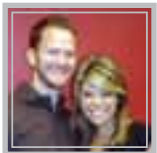
Church Plant: Movement Church, Richmond
Sponsor Church: Movement Church, Richmond



COOK, ROGER

Wife: Charity

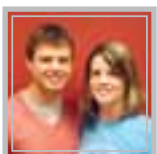
Church Plant: Crosspointe Community Fellowship, Tazewell
Sponsor Church: Pioneer Baptist, Max Meadows



CRAFT, JOEY (CPA)

Wife: Page

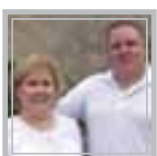
Church Plant: Restoration Church, Washington, DC
Sponsor Church: Restoration Church, Washington, DC



FISKE, PAUL (CPA)

Wife: Kelly

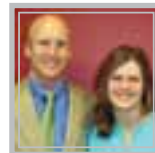
Church Plant: Aletheia-Harrisonburg, Harrisonburg
Sponsor Church: Aletheia-Harrisonburg, Harrisonburg



HARVILLE, TIM (LCP)

Wife: Cathy

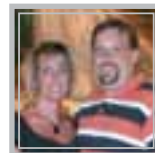
Church Plant: Iglesia Bautista de Hillcrest, Ridgeway
Sponsor Church: Hillcrest Baptist, Ridgeway



HAYDEN, JOHN (CPA)

Wife: Michelle

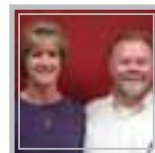
Church Plant: Harvest Fellowship Baptist, Smithfield
Sponsor Church: Harvest Fellowship Baptist, Smithfield



HEWITT, JAMES

Wife: Rachel

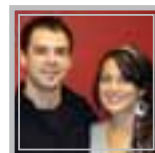
Church Plant: Foundations Community, Chesapeake
Sponsor Church: Sonlight Church, Chesapeake



HILLS, STEVEN

Wife: Debbie

Church Plant: North Suffolk Baptist Mission, Suffolk
Sponsor Church: Southside Baptist, Suffolk



JORDAN, CLIFF

Wife: April

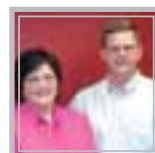
Church Plant: Movement Church, Richmond
Sponsor Churches: Beulah Baptist, Lynchburg;
Midway Baptist, Phenix; Grove Ave. Baptist, Richmond



KIDD, RYAN

Wife: Jennifer

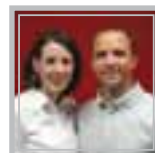
Church Plant: Remnant Church, SBC, Richmond
Sponsor Church: Mount Pleasant Baptist,
Colonial Heights



KIRK, BERT

Wife: LuAnne

Church Plant: True Course Community, Va. Beach
Sponsor Churches: Va. Beach Beacon Baptist, Va. Beach;
Palestine Baptist, Huddleston



KNIGHT, NATHAN

Wife: Andria

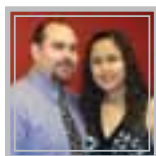
Church Plant: Restoration Church, Washington, DC
Sponsor Church: Green Ridge Baptist, Roanoke



LA COURSIERE, NOAH (CPA)

Wife: Julie

Church Plant: Essential Church, Va. Beach
Sponsor Church: Essential Church, Va. Beach

**MANGIERI, FERNANDO (CCP)**

Wife: Marcela

Church Plant: Iglesia Bautista Nueva Esperanza, Richmond

Sponsor Churches: Kingsland Baptist, Richmond

Iglesia Baptista El Camino, Richmond

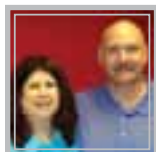
Iglesia Bautista El Refugio, Richmond

**MONTALVO, RUDY**

Wife: Claudia

Church Plant: TBD

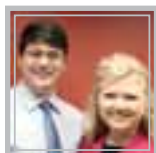
Sponsor Church: TBD (Sponsor Needed)

**MOSER, EDGAR (LCP)**

Wife: Ginny

Church Plant: Life Pointe Church, Roanoke

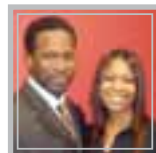
Sponsor Church: TBD (Sponsor Needed)

**MULLINAX, BRADLEY (CPA)**

Wife: Bethany

Church Plant: Oasis Church, Lynchburg

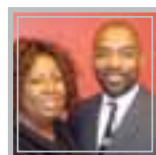
Sponsor Church: Oasis Church, Lynchburg

**PAIGE, LARRY**

Wife: Sherry

Church Plant: TBD

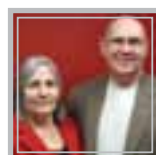
Sponsor Church: TBD (Sponsor Needed)

**REDMOND, ERIC**

Wife: Pam

Church Plant: Reformation Alive Baptist, Lanham, MD

Sponsor Church: Upperville Baptist, Upperville

**ROBBINS, GARY (CPM)**

Wife: Susie

Church Plant: Church Planting Missionary, Southwest

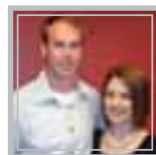
Sponsor Church: Christian Life Fellowship, Jonesville

**ROBBINS, MARK (CPA)**

Wife: Michelle

Church Plant: Christian Life Fellowship, Jonesville

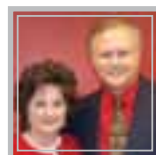
Sponsor Church: Christian Life Fellowship, Jonesville

**ROCKEY, NATE (CPA)**

Wife: Leah

Church Plant: The Point Church, Charlottesville

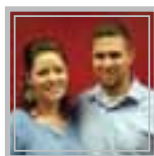
Sponsor Church: New Life Community Church, Louisa

**ROSE, GEORGE "BUBBA"**

Wife: Nedra

Church Plant: Oasis Church, Lynchburg

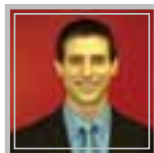
Sponsor Church: Hyland Heights Baptist, Lynchburg

**SCHLOMANN, NATE (CPA)**

Wife: Katie

Church Plant: Village Church of Midlothian, Midlothian

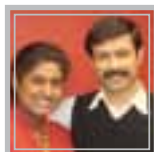
Sponsor Church: Village Church of Midlothian, Midlothian

**SCOTT, BRYAN (CPA)**

Wife: Aimee

Church Plant: Pillar Church, Stafford

Sponsor Church: Pillar Church, Stafford

**SHINDE, ANANT (CCP)**

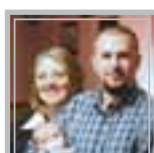
Wife: Suhasini

Church Plant: Swagath South Asia Center, Southeast/Central-East

Sponsor Churches: Staples Mill Road Baptist, Glen Allen;

Grace Community Baptist, Richmond;

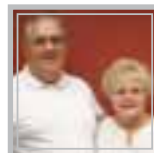
Reservoir Community Church, Newport News

**SLUSS, JEREMIAH**

Wife: Lauren

Church Plant: Grace Fellowship Baptist, Haysi

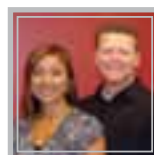
Sponsor Church: First Baptist, Pound

**STAPLETON, JOHN**

Wife: Jan

Church Plant: Crossroads Community Fellowship, Marion

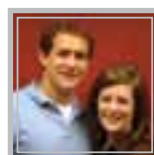
Sponsor Church: Rosedale Baptist, Abingdon

**THOMPSON, DANNY**

Wife: Amy

Church Plant: Bridge of Hope Church, Abingdon

Sponsor Church: Rosedale Baptist, Abingdon

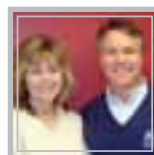
**TURNER, GABRIEL**

Wife: Kari

Church Plant: The Point Church, Charlottesville

Sponsor Churches: New Life Community, Louisa

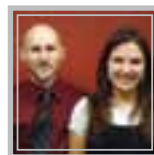
Pleasant View Baptist, Lynchburg

**UNDERHILL, RICHIE**

Wife: Christie

Church Plant: The Quest Church, Richmond

Sponsor Church: Parkway Baptist, Moseley

**WALKER, JASON**

Wife: Karah

Church Plant: Brambleton Bible Fellowship, Ashburn

Sponsor Church: Upperville Baptist, Upperville



church planters

Different Shapes and Sizes

by Mark Custalow, Director of Multiplying Churches and Church Planting Strategist, Southeast Region

Church planters come in different shapes and sizes. No two church planters are exactly alike. Some factors that account for the differences in church planters are personality, experience, and gifts. Some are “from here’s” (those from the area in which they minister), and some are “come here’s” (those from outside the area in which they minister). The differences are many indeed. Recognizing this, your SBCV church planting strategists have developed several categories in which SBCV church planters serve.

APPRENTICESHIP is the first category of church planting service. A church planter apprentice (CPA) is one who expresses a call to church planting and needs some guidance in his preparation to plant. Apprentices are paired with experienced church planters for 12-24 months to learn the skills necessary to plant effectively. During that time, apprentices learn about the community in which they will plant and begin the task of enlisting a team to join them in their church planting journey.

The most common category in church planting service is that of a **CHURCH PLANTER**. A church planter is one who expresses a call to plant a church in a specific place among a specific population segment. SBCV church planters always work within the sponsorship of a local church. Church planters enlist and develop a planting team, a core group, and a launch team to partner together to start a new church.

A more selective category in church planting service is that of a **CATALYTIC CHURCH PLANTER (CCP)**. Merriam-Webster defines a catalyst as an “agent that provokes or speeds significant change or action.” In like fashion, a catalytic church planter is gifted to initiate a new church every 24 months. This is done in one of two ways:

1. The first model of catalytic

church planting is one in which the planter works intentionally to multiply himself through a team of leaders that launches and sustains a new church. Once the church is established, the catalytic planter then moves on to plant again in another location with another team.

2. The second model of catalytic church planting is one in which the planter works to establish a fundamentally sound and healthy church that is then used as a church planting center. The planter then enlists and trains teams that are sent out of that church every 24 months.

The final category in church planting service is that of a **CHURCH PLANTING MISSIONARY (CPM)**. A church planting missionary is one who expresses a call to saturate a large people group with the Gospel in a manner that results in the multiplication of new churches. These new churches resemble the nature of a New Testament house church, and they are led by pastoral leaders developed from among the focus people group. A church planting missionary is personally involved in launching at least three such churches each year. By design, these new churches will continue to reproduce other churches. A distinguishing factor of church planting missionaries is that they do not work alone. Rather, they enlist a team of churches, individuals, and organizations to assist them in transforming a people group with the Gospel.

In every category of church planting, SBCV church planters have two important common characteristics: they work to plant evangelistic churches, and the churches they lead have the “DNA” to reproduce themselves continually into other new churches. Has God been speaking to you about planting a new church? Your regional church planting strategist is prepared to assist you in starting your church planting journey.

RESOURCE

■ Websites:

www.sbcv.org/multiplying
www.sbcv.org/become_a_planter

■ SBCV Contact:

Call 888-234-7716 to get information from the church planting strategist in your region.

Is God speaking to you about planting a new church?





A Merger Multiplies

by Don Cokes, Church Health
Strategist, Southeast Region



With Bethel Baptist Church in Chesapeake as its sponsor, Beacon Baptist Church in Virginia Beach began as a church plant in the summer of 2001. They first met in homes and eventually landed at Strawbridge Elementary School. Church member Beth Patch remembers, “they had a large trailer they would unload at the school, have church, and then load it back into the trailer until the next week.” For nearly three years, Beacon continued this church-in-a-box routine. They were a growing group with a pastor and leaders, but they didn’t have a building and prayed the Lord would provide. Meanwhile, nearby, Virginia Beach Baptist Church was a congregation with a building but few members and no pastor. The church had begun in the 1980s as a church plant but needed new life. God brought these two congregations together to form a

new church in August 2005, now known as Virginia Beach Beacon Baptist Church (VBBBC).

The union of the two churches was just the beginning of the Kingdom multiplication that would take place. Since that time, Pastor Gordon Ellsworth has led VBBBC to support the planting of more churches. VBBBC has sponsored Aletheia-Norfolk, which meets on the campus of Old Dominion University (ODU). Aletheia’s pastor, Jamie Limato, gratefully testifies, “Virginia Beach Beacon Baptist has been a blessing to us as a church plant sponsor. The people

have had an impact on the campus of ODU through their servant hearts.”

The multiplication continued as Pastor Gordon led VBBBC to sponsor True Course Community Church in Virginia Beach, a ministry to Oceana Air Force Base. For a time, VBBBC also shared its facilities with True Course. Church planter Bert Kirk shares, “Our name is based on the fact that we want people to see God as the immovable

foundation for life ... we are inviting people to chart a true course for life by answering God’s

call to serve. Gordon Ellsworth and VBBBC modeled that for us.”

Virginia Beach Beacon Baptist Church is a testament to Kingdom increase not by addition, but by multiplication. It is a living example of churches planting churches, planting churches... If your church would like to sponsor a church plant, contact your regional church planting strategist.

RESOURCE

■ Websites:
www.vbbbc.org
www.aletheianorfolk.com

■ SBCV Contact:
Call 888-234-7716 to get information from the missionary in your region.

■ Consider:
Is your church ready to increase? Consider going outside your walls by sponsoring a church plant.



Are you ready?

Disaster Relief 2010 Training Dates

North - Feb 19-20
Central-East - Mar 5-6
Central-West - Mar 12-13
Southeast - Apr 9-10
Southwest - May 14-15

Statewide Advanced Training
will be offered at E412, Apr 30-May 1

www.sbcv.org/mobilizing





Little Is Much When God Is in It

by Darrell Webb, Church Health Strategist, North Region

Whether it is one young boy giving his lunch to feed over five thousand or one small church assisting in sponsoring five church plants, little is much when God is in it. From the very beginning of time, God has ordained seemingly insignificant individuals or small groups of His people to accomplish God-sized tasks to multiply the work of His Kingdom here on earth.

In the year 1775, God established Upperville Baptist Church (UBC) in beautiful Fauquier County. The present church was formed after a split during the Old Light/New Light controversy in 1833. The new congregation opted for missions and education of clergy. Today, the church is small and made up of mostly retired individuals who are life-long members

of UBC and the children of several generations of members. The church has encountered various

When presented with an opportunity to sponsor a church plant in ways it could afford, Upperville Baptist readily agreed.

Indo Park Baptist Church

Living Water Church

Reformation Alive Baptist Church

DC Urban Mission

Brambleton Bible Fellowship



Pastor Bill Wennersten

struggles that have brought a decline in ministry and in attendance over the years.

UBC did not have an abundance of resources and had not been involved in church planting for nearly one hundred years but, when presented with the opportunity to sponsor an SBCV church plant in ways it could afford, the church readily came on board. UBC Senior Pastor Bill Wennersten is also a church planting strategist with the SBC of Virginia. He is involved in the coaching and strategy planning for area planters. As pastor, he has led the small congregation of Upperville to sponsor five church plants (Indo Park Baptist Church, Living Water Church, Reformation Alive Baptist Church, DC Urban Mission, and Brambleton Bible Fellowship) in just two years. Pastor Bill constantly keeps the plants and planters' names and needs in front of the congregation. UBC prays for the plants and planters and also provides funding to help them with expenses. On occasion, the planters come to UBC to preach and report about the work that God is doing through their ministry.

Upperville Baptist Church is a shining example of how God is once again using a small group of His faithful remnant to accomplish a God-sized task. They are multiplying disciples of Jesus Christ through the sponsorships of church plants in the North Region.



RESOURCE

■ **Website:** www.sbcv.org

■ **SBCV Contact:**

Call 888-234-7716 for details from the missionary in your region.

■ **Consider:**

If your church would like to become a sponsor for an SBCV church plant, contact your regional SBCV church planting strategist.



From Chop Shop to God's Shop

by Steve Bradshaw, Director of Maturing Churches and Church Health Strategist, Central-East Region

GOD'S STOREHOUSE BAPTIST CHURCH

was chartered in January 2000 with 49 members and aligned with the SBC of Virginia in October of that year. Also in 2000, they purchased a vacant house with 3.7 acres of land at 5007 Jessup Road in Richmond. The house had an attached three-car garage, which had formerly been a chop shop where thieves brought stolen cars and harvested parts for sale.

Church members went to work dismantling a large chimney inside the garage. They used the matching bricks to wall up the car bays and transform the garage into a 150-seat worship center. The rooms of the house were renovated into the church office, pastor's study, nursery, kitchen, dining area, several classrooms, and four bathrooms. Placing a steeple on top and adding a marquee, they transformed a building once used by Satan into a storehouse of God's grace. A large picnic pavilion was added later, and the parking lot was paved to accommodate 70 cars. The church even has a fiberglass rolling baptistery that is kept in one of two storage buildings behind the church.

This past Easter, the church called Dr. Tom Lovorn to serve as senior pastor. Dr. Tom, as he's affectionately called, had retired in 2004 as senior pastor of Monumental Baptist Church in Petersburg, where he had served for almost 19 years. He explains, "I couldn't stay retired because God never retires and, as long as we're able, He doesn't expect us to

retire from serving Him."

On Sunday, October 18, 2009, God's Storehouse Baptist Church celebrated "Friend Day." Church members were encouraged to bring one or more friends to church that day. Dr. Tom challenged the congregation to have 100 people present, promising to kiss a pig if they met the goal. If less than 100 were present, the deacons would have to kiss the pig!

The church family enthusiastically responded to the challenge—150 people attended! After Sunday School and the worship service, those present went outside to meet Little Willie, a miniature pot-bellied pig from Broken Road Farm in Amelia. The pastor then fulfilled his vow by kissing the pig! Afterwards, the congregation shared a catered lunch and enjoyed a Southern Gospel concert.



God's Storehouse Baptist Church is considering relocating to reach more people for Christ. Because they have been faithful in outreach, the move could come sooner out of necessity!

The church has moved from chop shop (nothing to do with the pig!) to God's shop, to shopping for the lost. What extreme measures would your church take to reach people for Christ?

RESOURCE

■ **Website:** www.sbcv.org

■ **SBCV Contact:**

Call 888-234-7716 for details from the missionary in your region.

■ **Consider:**

Nothing is too odd for God's use.



Reaching the World Next Door

by Larry Black, Church Planting Strategist, Central-West Region

There are an estimated 144 languages spoken in Virginia and Washington, DC, not counting “southern hillbilly.” It would be an impossible task to evangelize these language groups if we did not have language church planting missionaries and language catalytic church planters.

Language church planting missionaries (CPMs) have people-group focuses and are responsible to evangelize those people groups and start churches among them. They identify leaders in the harvest and develop them as lay church planters. A CPM may start three or more lay-led churches in a year with the desire that those churches will reproduce as well. Our prayer is that this will result in a church planting movement among various people groups.

The SBCV language church planting missionaries are:

JOHN KIRWA MARITIM seeks to reach people who speak Swahili, Amharic, and other African tribal languages.

MANUEL CHACON seeks to reach all Spanish-language groups living in Washington, DC.

ANDREY SHIRIN seeks to reach Russians and eastern Europeans.

CLOVIS PAUSE seeks to reach all Spanish-language groups living in Central VA.

Language catalytic church planters (CCPs) also have people group focuses, but their approach to ministry is different than that of CPMs. A language CCP plants churches among a people group and will either remain at a church plant and send out church planters he has developed or leave to plant another church approximately every two years.

The SBCV language catalytic church planters are:

VERNIG SUÁREZ witnesses and church plants among the Spanish-language people groups living in Hampton Roads (Southeast Region).

DANIEL BANNISTER witnesses and church plants among the Spanish-language people groups in the Shenandoah Valley and Northern VA.

CARLOS PAYAN witnesses and church plants among the Spanish-language people groups living in the Roanoke Valley and western VA.

JOHN WYBLE is our witness among the deaf in western VA.

Each of these men carries a great burden for the lost and a deep passion to see Christ shared among their people groups through church planting. Each runs the risk of burnout due to the massive need. For many who come to faith in Christ in these people groups, they face the possibility of their families disowning them, losing their inheritance or jobs, or having their lives put at risk. Please ask your church to make it a priority to pray for these missionaries serving in our midst.



STUDENT PASTOR RETREAT 2010
FEATURING DR. ALLEN JACKSON



FRIDAY, FEBRUARY 19 THROUGH
SATURDAY, FEBRUARY 20 AT
GREAT WOLF LODGE
WILLIAMSBURG
WWW.SBCV.ORG/STUDENT2/SPRETREAT





SBC
2010 Vacation Bible School
Training Clinics

Equip your church to bring children the message of Jesus.

- April 10**
 Colonial Heights
 Independence
 Lynchburg
 Alexandria
- April 17**
 Peninsula/Newport News
 Christiansburg
 Danville
 Charlottesville
- April 24**
 Chesapeake/VA Beach
 Bristol
 Roanoke
 Fredericksburg

May 1
 Language and special needs track at 4412 Swift Creek Baptist Church, Midlothian

VBS Training Clinics are presented by SBCV teams who have been personally mentored by LifeWay trainers.

Learn more at www.sbcv.org/children.



studentz YEC

Surrender
Philippians 1:21

January 15-16, 2010
 London Bridge Baptist Church,
 Virginia Beach

With Speakers **David Nasser**
 & Special Guests **Phil Wickham, Superchick, & Tim Bertram**

Only \$25 if registered by December 15, \$35 after December 15.
 Learn more and register at www.sbcv.org/studentz.

SBC



Statewide Bible Drill & Youth Speakers' Tournament provides kids and young people with the skills they need to search the Scriptures with confidence.

Learn more at www.sbcv.org/events



May 15, 2010
Beulah Baptist Church,
Lynchburg

studentz

WIPEOUT
ROMANS 8:13

studentz CAMP

July 12 - 16, 2010
 Liberty University, Lynchburg

Featuring speaker
Ken Freeman

Only \$250 through March 3rd!
(Late rate is \$275. Registration ends May 31st at 5 PM.)

SBC *Learn more at*
www.sbcv.org/studentz



The Strength of Teaming

by Larry Black, Church Planting Strategist, Central-West Region

Henry Blackaby said, “The apostle Paul never planted a church by himself. The only city where Paul went and did not plant a church was at Athens, where he was alone.” When one church planter tries to plant a church by himself, it can be very difficult. Team church planting, however, involves a team of several church plant staff members planting a church together. This model produces more fruit more quickly than individually led church plants.

Two recently started SBCV church plants took the team church planting approach and testify of its effectiveness: Bedrock Community Church in Bedford, led by Jonge Tate, Chris Dowd, and Jeremy Minor; and Oasis Church, led by Bubba Rose, Brad Mullinax, and Steve Harman. These team plants have outpaced individually led church plants more than four to one. They and their families exhibit a great sense of joy and fulfillment in this type of church planting.

Distinguishing characteristics of teaming are:

- Team planning and team thinking
- Serving one another
- Sense of “our” ministry rather than “my” ministry
- Success measured by team impact on the Kingdom
- A sincere love for one another

When asked to reflect on Ecclesiastes 4:9-12, these Trojans for the Kingdom gave testimony to God’s grace in their

collaborative team ministries. Their comments revealed the difference between a “me generation” approach to ministry and a true team setting where leaders serve each other, show deference, and passionately serve God.

Regarding the power of a team approach, they answered,

There is no doubt that safety exists in numbers. It builds confidence, boldness, and closeness within the group.

A great team can do great things, but our city does not need something great, it needs something God-sized. Only God can do God-sized things, so it is imperative that He lead the team.

On the necessity for humility and serving one another, they responded,

You cannot say enough about the need for humility and accountability in church planting. We try to help each other when we stumble but, more importantly, we try to prevent each other from stumbling.

Our team has resolved to be transparent with each other, which has proven to be both humbling and rewarding.

Teaming is as new as the Bible, but it is counter to our culture. Serving one another, preferring another above oneself, exalting the Savior—these are attitudes the Lord can and will bless.

RESOURCE

■ **Website:** www.sbcv.org

■ **SBCV Contact:**
Call 888-234-7716 for details from your region’s missionary.

■ **Consider:**
Why not consider joining another church in sponsoring a church plant?

TEAM CHURCH PLANTERS



BEDROCK COMMUNITY CHURCH



OASIS CHURCH



Women's Ministries 2010 Events

THE SOUTHERN BAPTIST CONSERVATIVES OF VIRGINIA

LEARN MORE AT
WWW.SBCV.ORG



Going Beyond FEATURING Priscilla Shirer

MCLEAN BIBLE CHURCH • VIENNA, VA • FEBRUARY 26-27

Between Us Ministers' Wives PRE-CONFERENCE

RICHMOND MARRIOTT • RICHMOND, VA • AUGUST 26-27

Living Proof Live FEATURING Beth Moore

RICHMOND COLISEUM • RICHMOND, VA • AUGUST 27-28



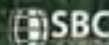
Studentz Mission Plant Trip 2010

On mission in the Dakotas

June 26 - July 2

Only \$150 through March 4th!

Price includes meals, lodging,
program fee, ministry materials, and
a great mission experience!



Learn more at www.sbcv.org/studentz



MARCH 7-14, 2010

"FOR I AM NOT ASHAMED OF THE GOSPEL,
BECAUSE IT IS GOD'S POWER FOR SALVATION
TO EVERYONE WHO BELIEVES, FIRST TO THE
JEW, AND ALSO TO THE GREEK" ROMANS 1:16

SBC OF VIRGINIA GOAL: \$1.25 MILLION

LIVE WITH URGENCY

SOWING TOGETHER FOR HARVEST
JOHN 4:35-37



WEEK OF PRAYER FOR
NORTH AMERICAN MISSIONS
AND THE ANNIE ARMSTRONG EASTER OFFERING*

National Goal: \$65 Million | www.AnnieArmstrong.com



PROCLAIMER

4101 Cox Road, Suite 100

Glen Allen, VA 23060

888-234-7716 | 804-270-1848

fax: 804-270-1834

website: www.sbcv.org

email: proclaimer@sbcv.org

Non-Profit Org.

U.S. Postage

PAID

Waynesboro, VA

Permit No. 129

Equipping God's People for Ministry

E412



Ephesians 4:12

*April 30 -
May 1*

*Swift Creek
Baptist Church,
Middlethian*



*Featuring
Jeff Jorg & Ed Stetzer*

www.sbcv.org/events

